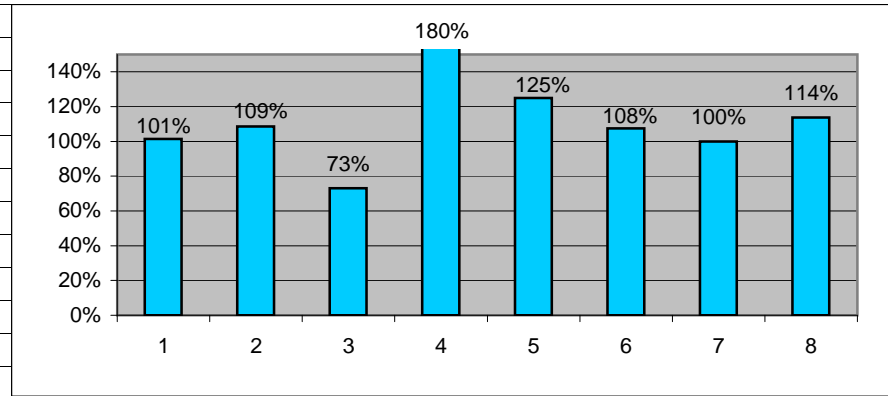
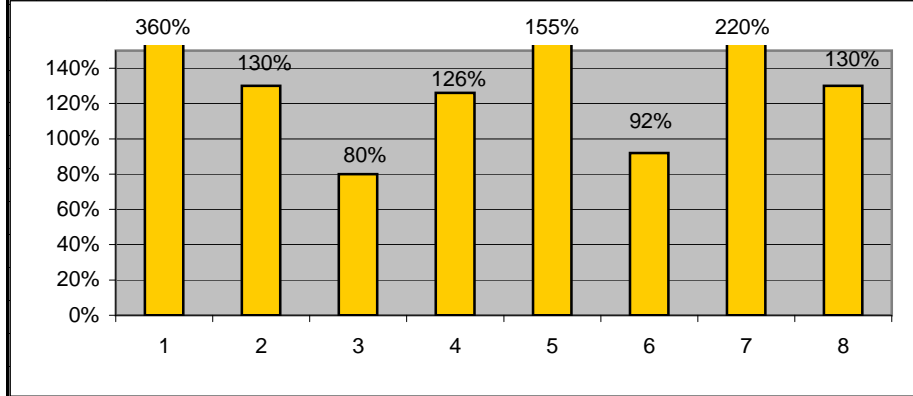


Domus results 0708
Project Hope

	Goal	Actual	% Achieved toward target	Project Hope: Results 0708
1	20	72	360%	At least 20 young people will be connected to a community resource for at least 3 months of the year
2	10	13	130%	At least 10 parents (family members) of Project Hope youth will be connected to a community resource for at least 3 months of the year
3	15	12	80%	At least 15 young people will successfully complete the Work and Learn program
4	50%	63%	126%	Of the referrals made to the program by the police department, 50% of the young people will not be arrested through June 30, 2008
5	40%	62%	155%	Of the referrals made to the program by juvenile probation, 40% of the young people will not be arrested through June 30, 2008
6	50	46	92%	Barry will develop 50 positive new relationships with youth identified as medium risk for committing a crime
7	15	33	220%	Barry will develop 15 positive new relationships with youth identified as high risk for committing a crime
8	10	13	130%	10 young people will obtain jobs and maintain them for at least 3 months
9			HIT	The heads of the police youth bureau and juvenile probation will report that Barry's involvement has helped them do their jobs



	Goal	Actual	% Achieved toward target	ARTS (Alternative Routes to Success): Results 0708
1	70%	71%	101%	70% of youth will hit at least one of their individual goals set during their action plans
2	70%	76%	109%	70% of students will improve their behavior throughout the year based on decreased suspensions
3			73%	Each family advocate will make 2 visits to each youth's home during the school year (youth on caseload)
4			180%	Family Development Plans will be created for at least 5 identified families on each advocate's caseload
5	80%	100%	125%	80% of full time staff who attended the initial 4-day TCI training will have learned the material
6	80%	86%	108%	80% of parents will be involved with their student's school life
7	80%	80%	100%	80% of students will be connected to a community resource for at least 4 months of the year
8	80%	91%	114%	80% of students will have an average daily attendance of 80% or higher